

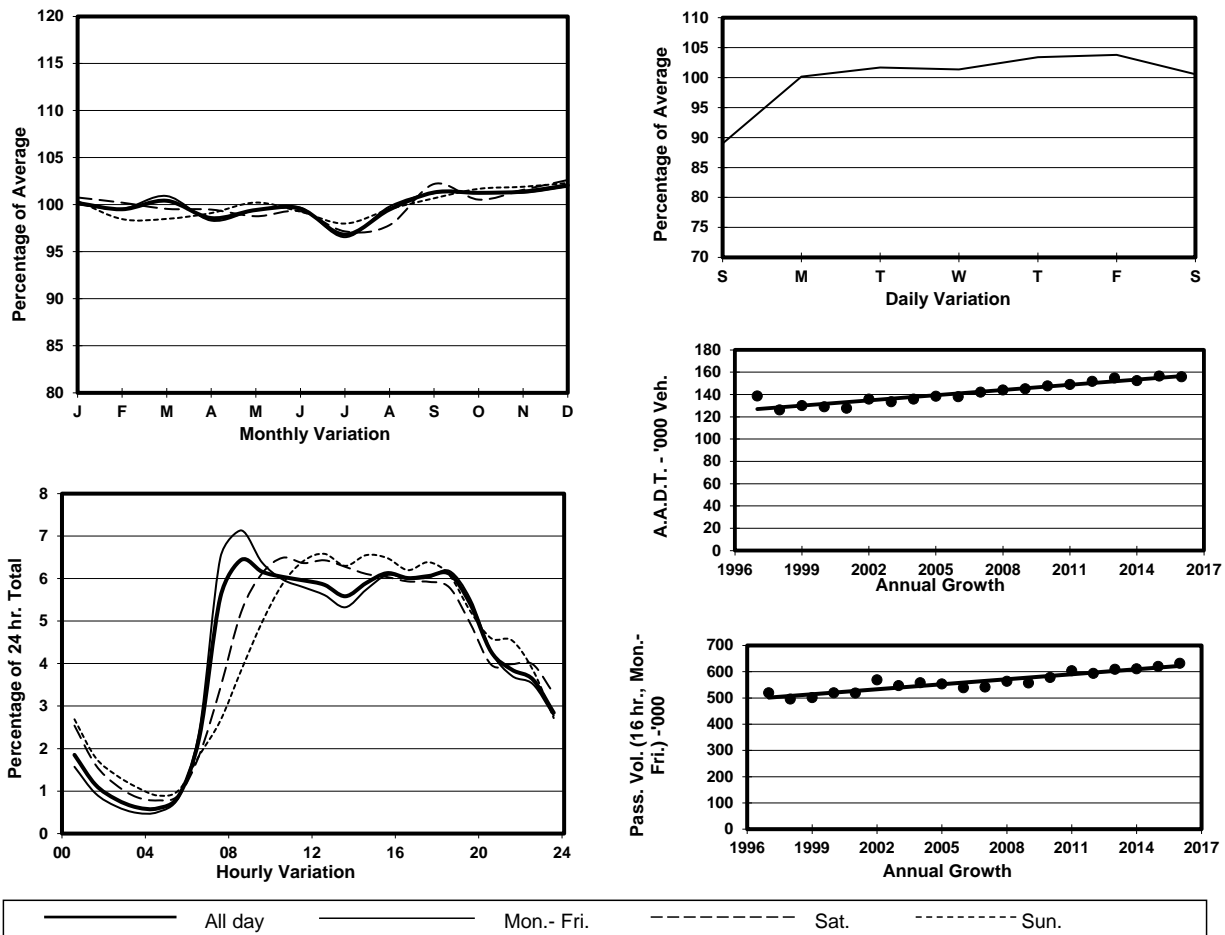
YEAR 2016

Location Hong Kong External Cordon(Boundary between the Northern Part and Southern Part of Hong Kong Island)

Stations on Cordon/Screenline

1004, 1021, 2201, 2202, 2206, 2401 and 2407

1. TRAFFIC FLOW VARIATION AND GROWTH



2. TRAFFIC CHARACTERISTICS (BY DIRECTION)

Parameter	All - Day	Mon. - Fri.	Sat.	Sun.
SOUTH BOUND				
A.A.D.T.	77840	79800	78710	70330
R 12 / 24 - %	70.2	70.9	69.3	67.3
R 16 / 24 - %	88.6	89.3	86.7	86.2
AM Peak Hour	0900-1000	0900-1000	0900-1000	0900-1000
One-way flow at AM peak hour	4840	5170	4800	3390
T - % (AM)	-	11.2	-	-
PM Peak Hour	1800-1900	1800-1900	1600-1700	1600-1700
One-way flow at PM peak hour	4640	4930	4690	4420
T - % (PM)	-	7.6	-	-
Prop.of commercial vehicles - 16 hr.	-	10.2	-	-
NORTH BOUND				
A.A.D.T.	78110	80370	79060	69200
R 12 / 24 - %	73.4	74.6	70.9	69.4
R 16 / 24 - %	89.4	90.2	87.3	86.9
AM Peak Hour	0800-0900	0800-0900	0900-1000	0900-1000
One-way flow at AM peak hour	5480	6330	4860	3540
T - % (AM)	-	9.5	-	-
PM Peak Hour	1700-1800	1700-1800	1700-1800	1700-1800
One-way flow at PM peak hour	5050	5190	4940	4730
T - % (PM)	-	11.3	-	-
Prop.of commercial vehicles - 16 hr.	-	10.4	-	-

3. OTHER INFORMATION AND COMMENT

Hong Kong External Cordon Year 2016

4. Vehicle classification and occupancy - Monday to Friday

Time		Class of vehicle									
		Motor	Private	Taxi	Private	PLB	Goods veh.		Non	Fr. Bus	
		Cycle	Car		LB		Light	M & H	Fr. Bus	SD	DD
0700-0800	Pro	4.4	39.3	22.9	3.6	5.1	9.9	2.6	7.6	0.1	4.6
	Ocp	1.1	1.4	2.0	8.1	13.9	1.7	1.3	20.7	29.5	58.7
0800-0900 Peak Hour	Pro	3.1	55.6	17.1	1.4	3.9	9.3	2.2	3.6	0.1	3.8
	Ocp	1.1	1.4	2.1	5.9	14.4	1.7	1.4	15.1	12.0	62.7
0900-1000	Pro	2.1	47.3	20.0	1.2	4.4	15.1	2.9	2.7	0.1	4.0
	Ocp	1.1	1.4	2.1	2.6	13.5	1.6	1.5	15.2	11.3	40.6
1000-1100	Pro	1.9	42.1	21.9	1.1	4.0	19.4	3.2	2.5	0.1	4.1
	Ocp	1.1	1.4	2.1	3.9	11.5	1.6	1.3	20.0	16.6	29.3
1100-1200	Pro	2.5	42.7	19.5	2.2	3.3	19.8	3.1	2.9	0.1	4.0
	Ocp	1.1	1.4	2.1	2.5	12.6	1.6	1.4	11.9	14.9	28.7
1200-1300	Pro	2.1	39.4	23.3	3.0	4.0	16.9	3.5	3.8	0.1	4.0
	Ocp	1.1	1.5	2.1	5.4	12.1	1.6	1.3	17.8	20.0	27.0
1300-1400	Pro	2.6	37.9	22.2	1.5	3.9	19.8	3.8	4.0	0.1	4.3
	Ocp	1.2	1.4	2.1	2.8	12.1	1.6	1.4	15.7	7.3	31.1
1400-1500	Pro	2.9	44.3	20.7	1.7	4.1	15.3	3.9	3.3	0.1	3.8
	Ocp	1.1	1.4	2.1	2.9	11.6	1.6	1.3	13.7	12.2	30.0
1500-1600	Pro	2.4	48.3	17.9	2.6	3.3	14.7	3.2	4.0	0.1	3.6
	Ocp	1.1	1.5	2.1	7.5	11.9	1.6	1.4	19.6	19.2	34.8
1600-1700	Pro	2.4	47.5	17.5	2.1	4.4	14.6	2.1	5.0	0.1	4.3
	Ocp	1.1	1.5	2.1	4.6	13.2	1.6	1.3	16.7	20.3	46.1
1700-1800	Pro	4.3	48.9	19.5	1.6	4.5	10.5	1.5	4.9	0.1	4.2
	Ocp	1.1	1.5	2.2	3.7	13.3	1.6	1.4	19.0	20.8	54.1
1800-1900	Pro	4.4	55.3	19.5	0.5	4.2	6.3	0.9	4.9	0.1	4.0
	Ocp	1.1	1.5	2.3	2.5	15.3	1.7	1.2	26.6	24.4	62.1
1900-2000	Pro	3.2	54.5	25.6	0.1	4.2	4.8	0.9	2.1	0.1	4.6
	Ocp	1.1	1.5	2.1	1.0	13.8	1.4	1.2	12.3	18.1	45.2
2000-2100	Pro	3.4	48.3	31.6	0.3	4.9	3.7	0.5	1.6	0.1	5.7
	Ocp	1.1	1.4	1.9	2.8	10.9	1.4	1.2	7.8	12.0	29.1
2100-2200	Pro	2.8	42.9	37.3	0.1	5.9	3.3	0.9	1.6	0.1	5.2
	Ocp	1.2	1.4	1.9	1.0	9.4	1.3	1.2	11.0	7.5	27.5
2200-2300	Pro	3.2	38.0	41.4	0.6	5.8	3.7	1.2	0.6	0.1	5.4
	Ocp	1.1	1.5	1.9	1.7	9.5	1.4	1.6	7.1	10.1	29.3
16 hours	Pro	3.0	46.2	22.5	1.6	4.3	12.2	2.4	3.6	0.1	4.3
	Ocp	1.1	1.4	2.1	4.9	12.6	1.6	1.3	17.6	17.0	40.8

Legend

Pro. Proportion of vehicles in % (Sum may not add up to 100% due to figure rounding)*

Ocp. Average occupancy of vehicles including both driver and passengers*

M&H Medium and Heavy

* All traffic data are collected from combined bounds except for one way traffic